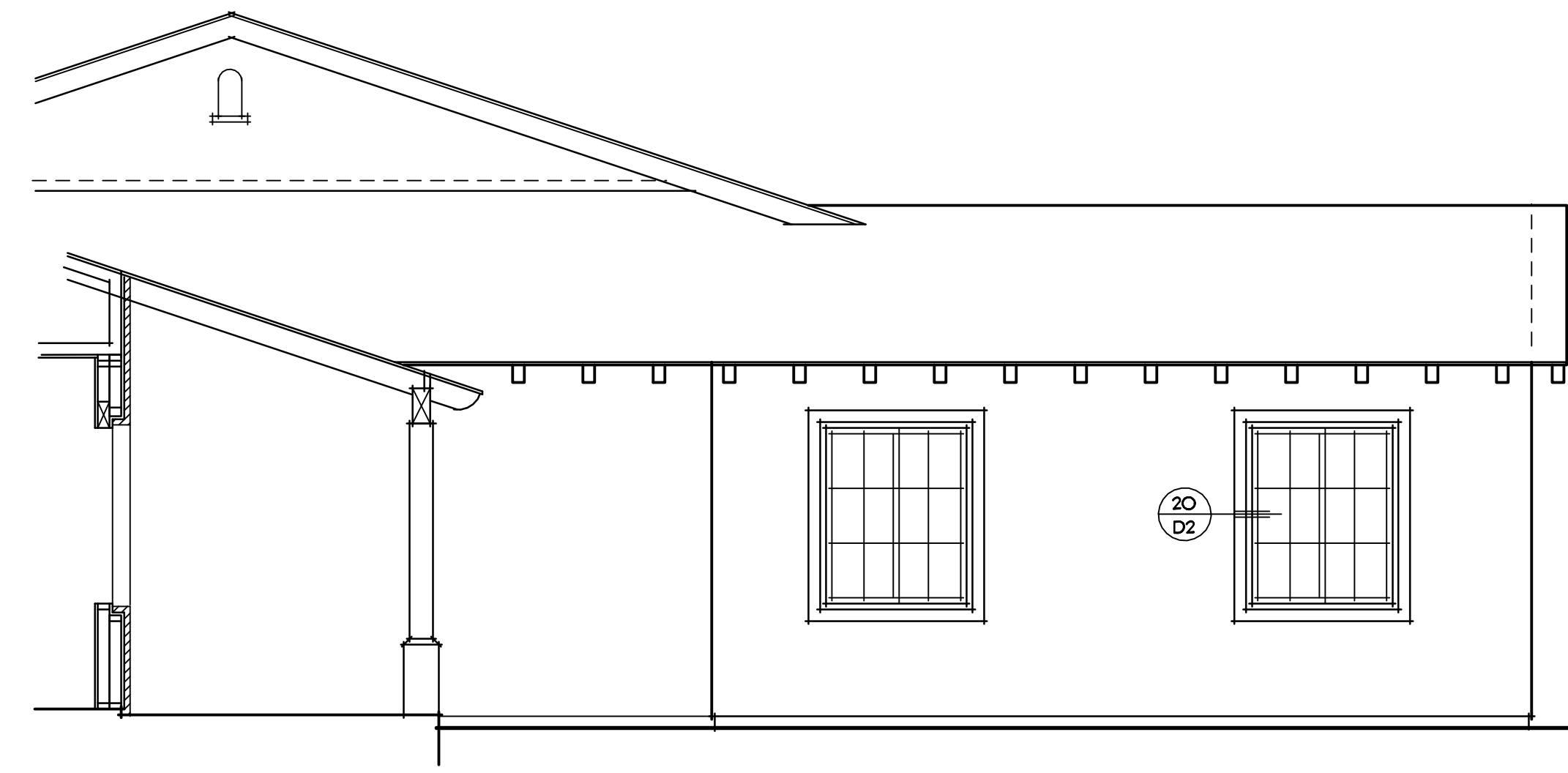
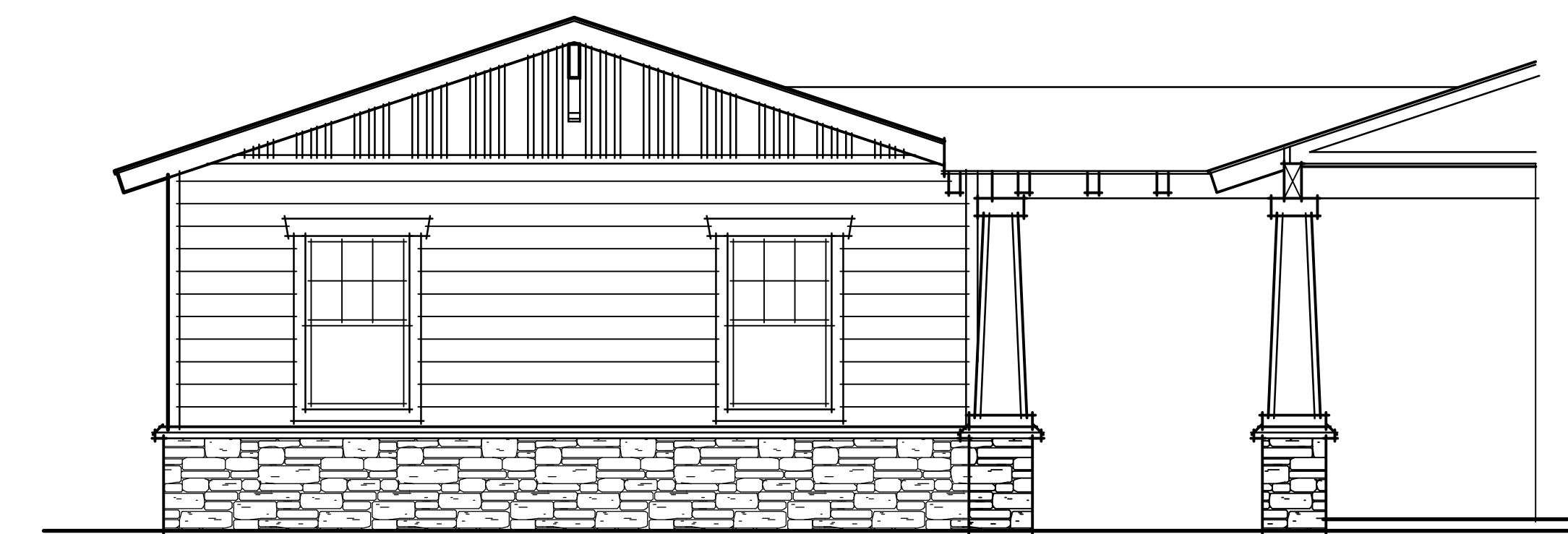


SCALE: 1/4" = 1'-0"

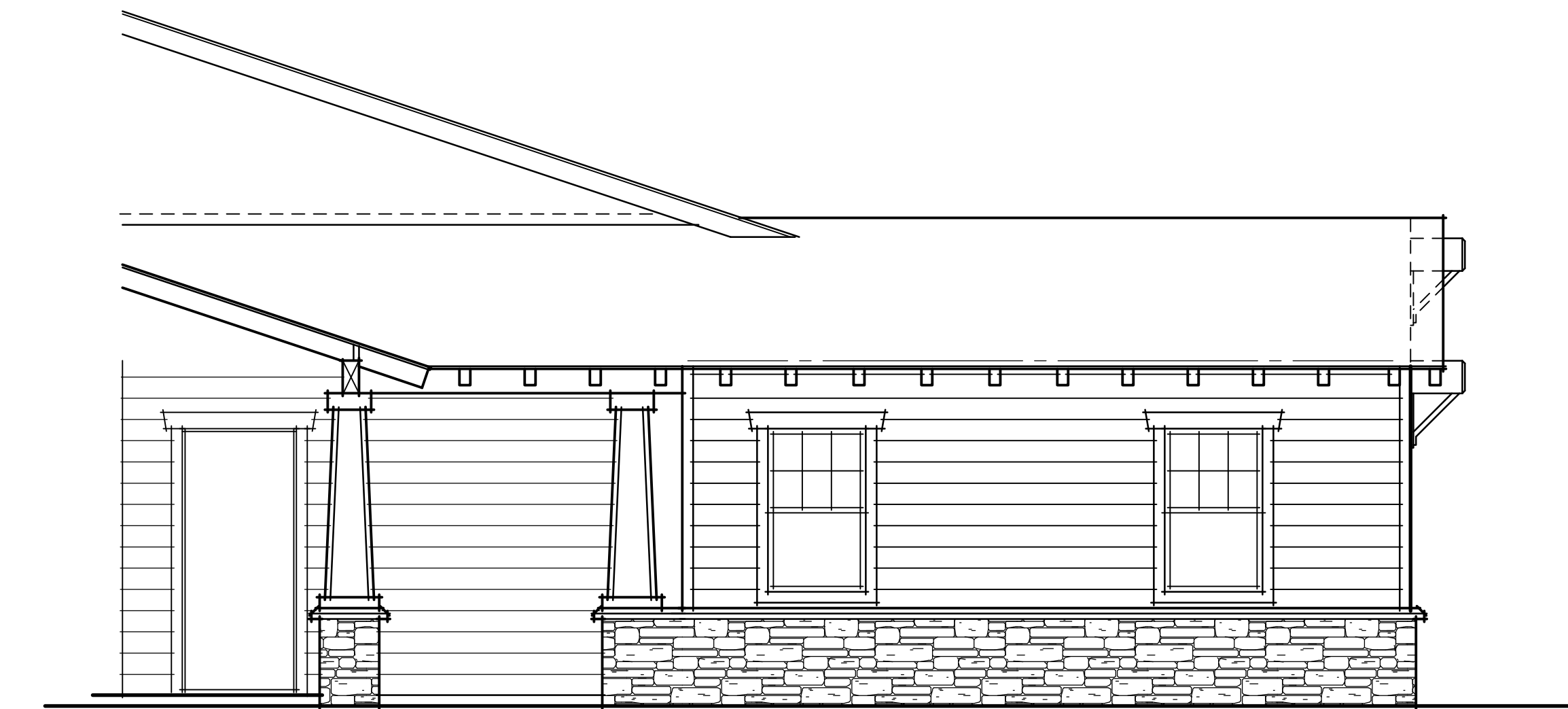


COURTYARD ELEVATION '2D'

REFER TO BASIC PLAN FOR NOTES, CONDITIONS, AND DIMENSIONS NOT SHOWN

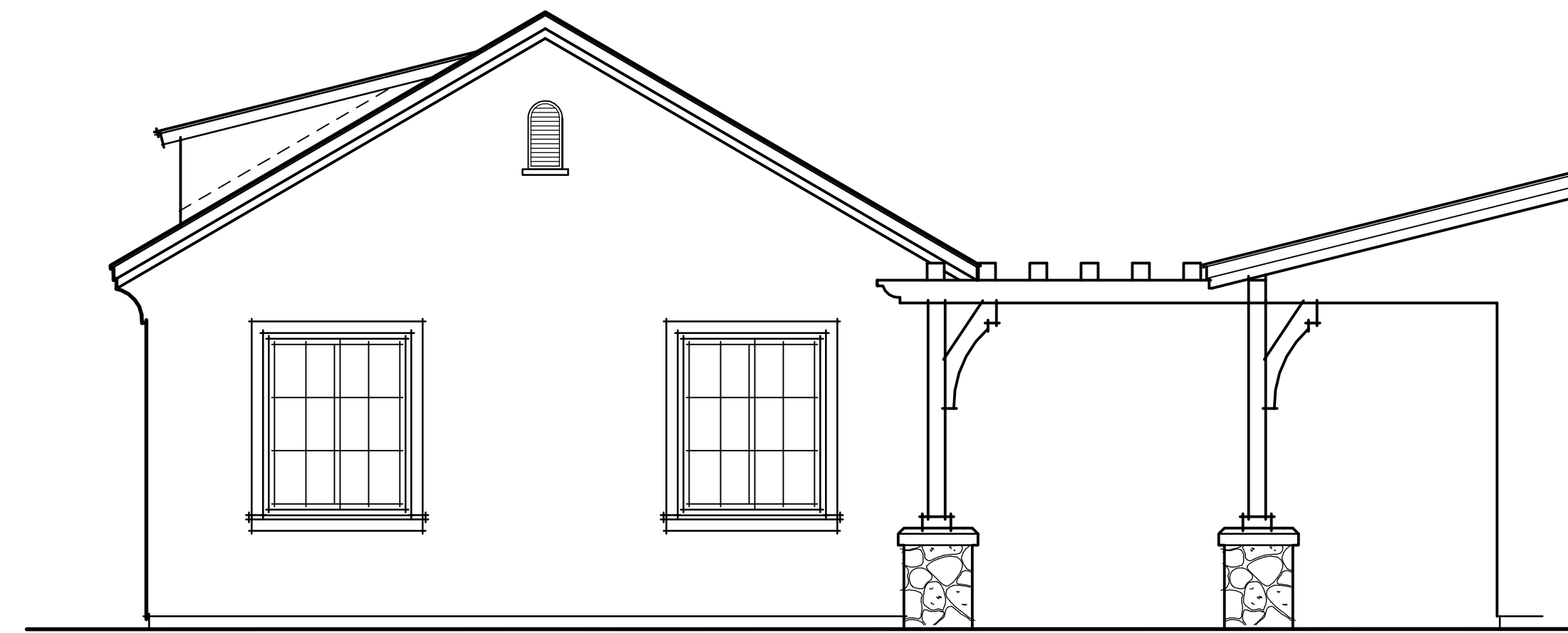


SCALE: 1/4" = 1'-0"

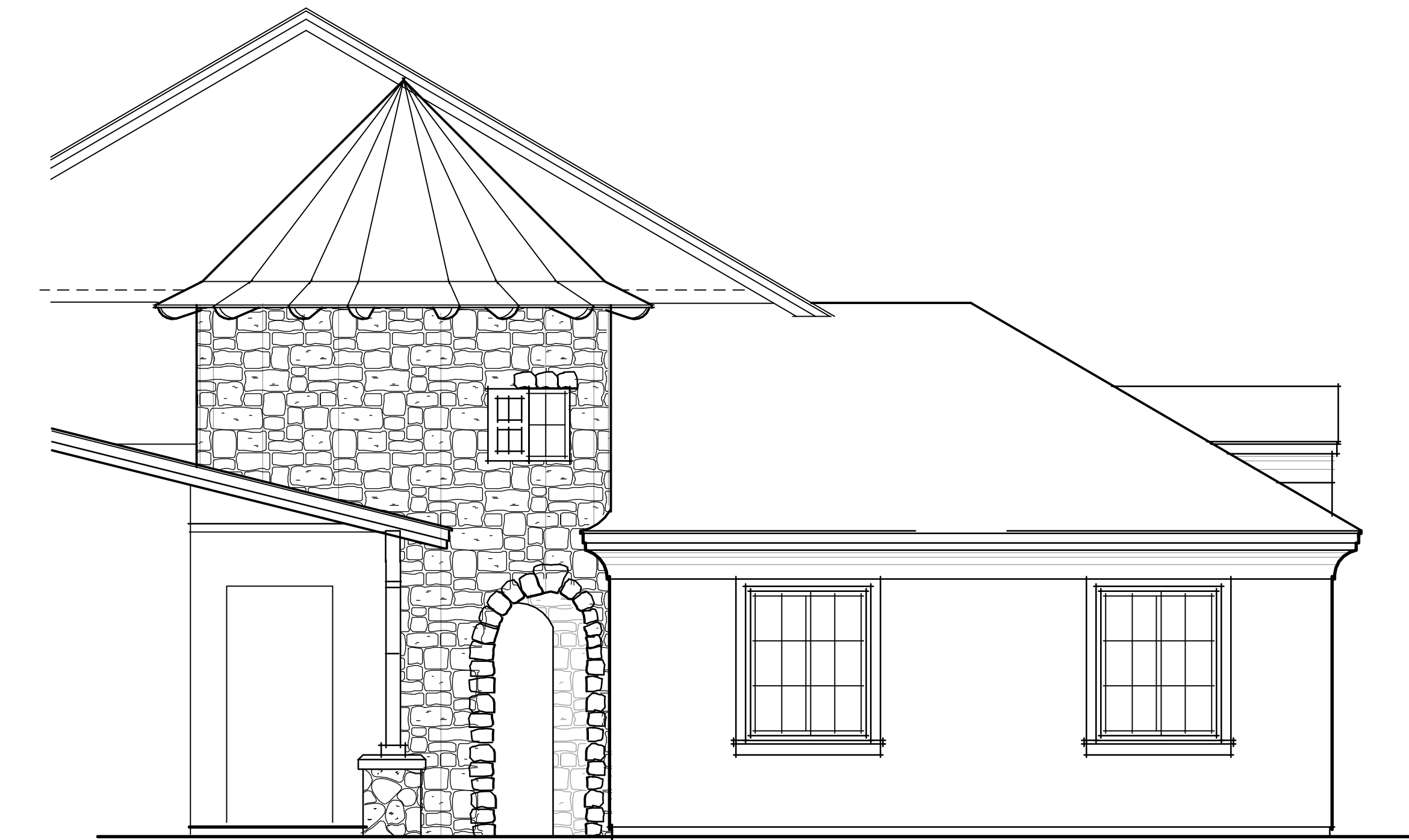
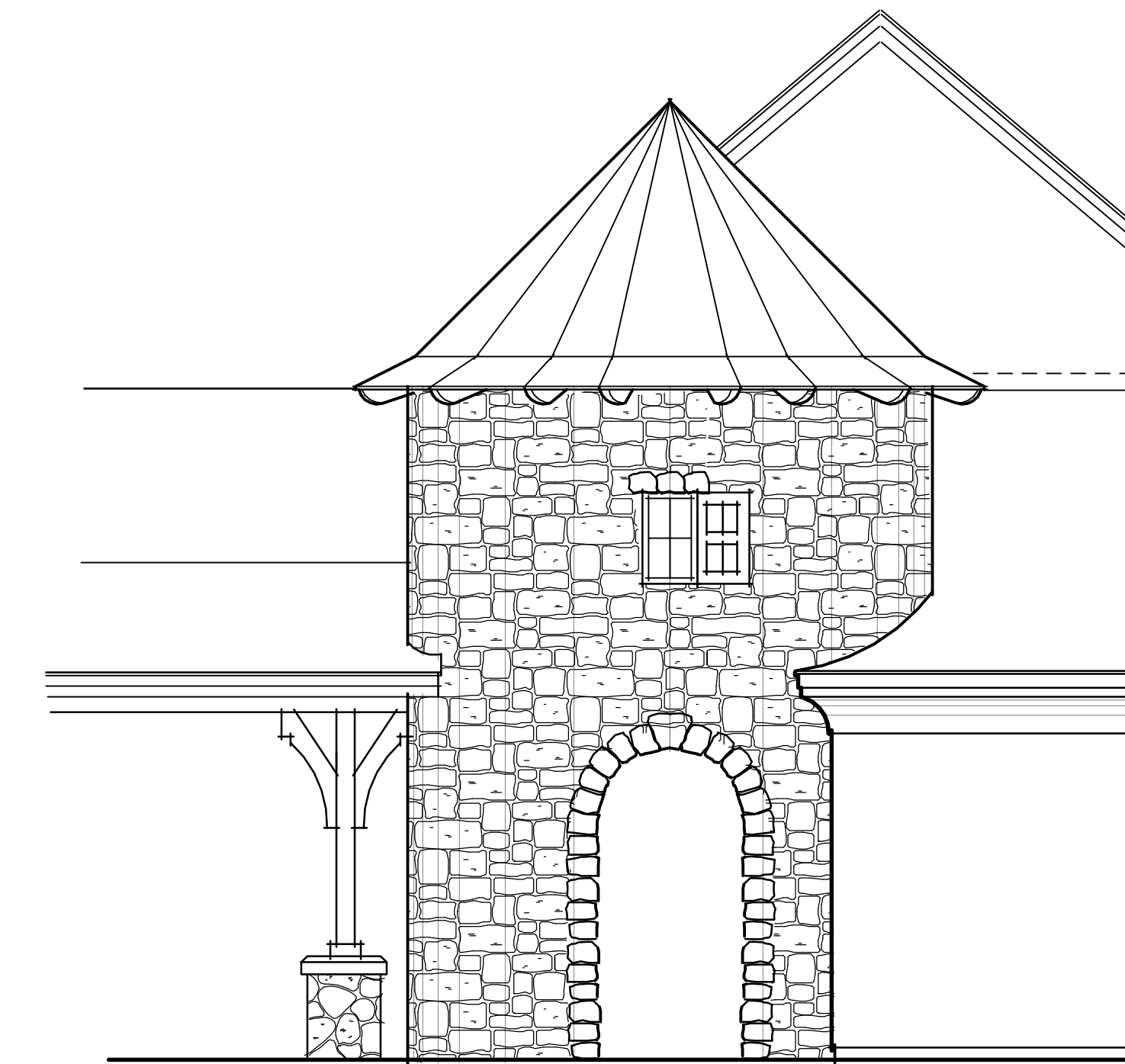


COURTYARD ELEVATION '2C'

REFER TO BASIC PLAN FOR NOTES, CONDITIONS, AND DIMENSIONS NOT SHOWN

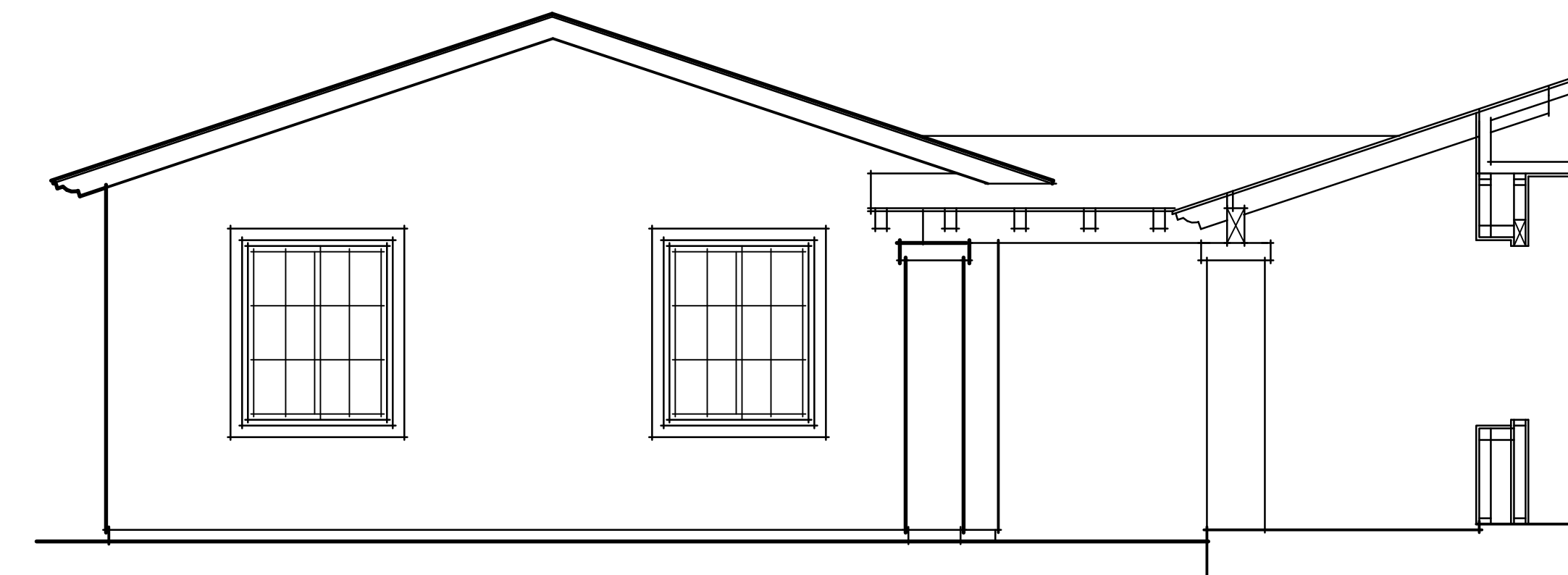


SCALE: 1/4" = 1'-0"

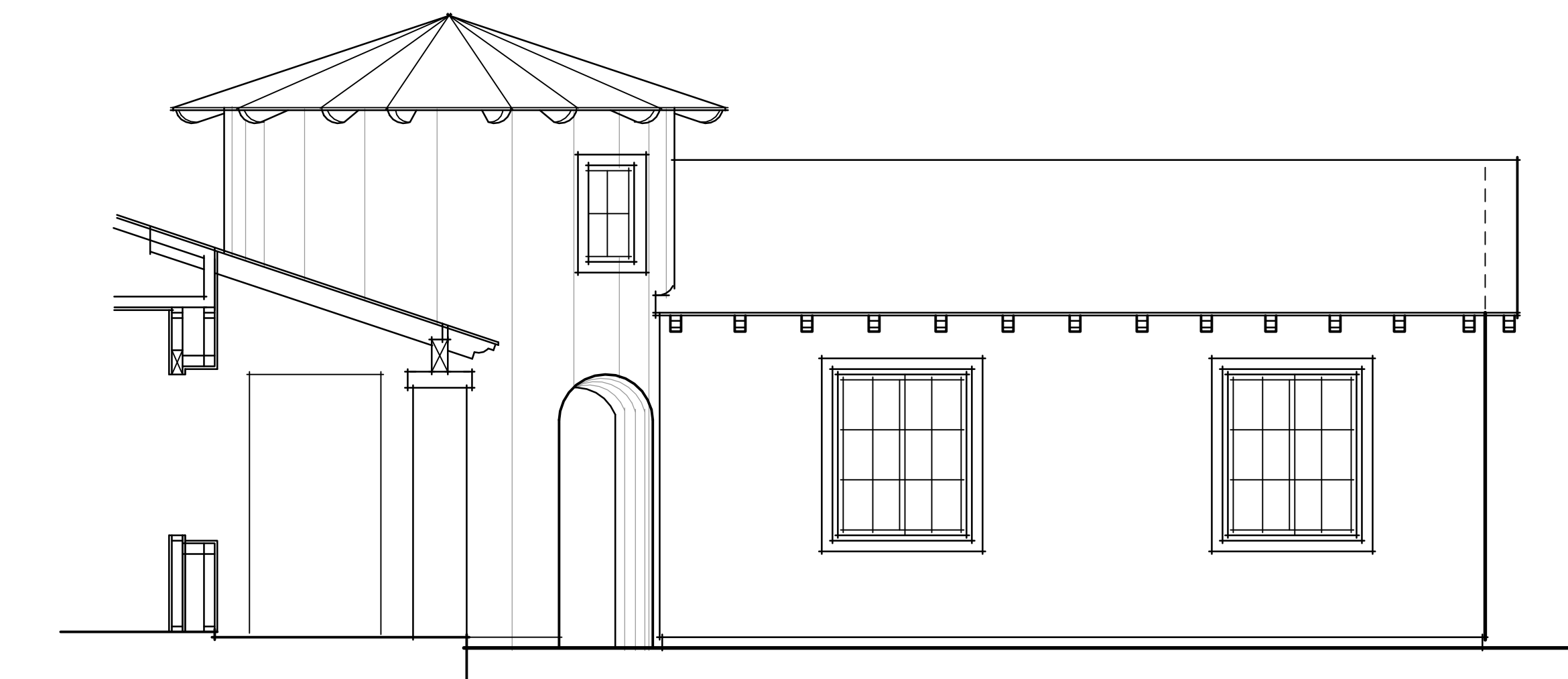
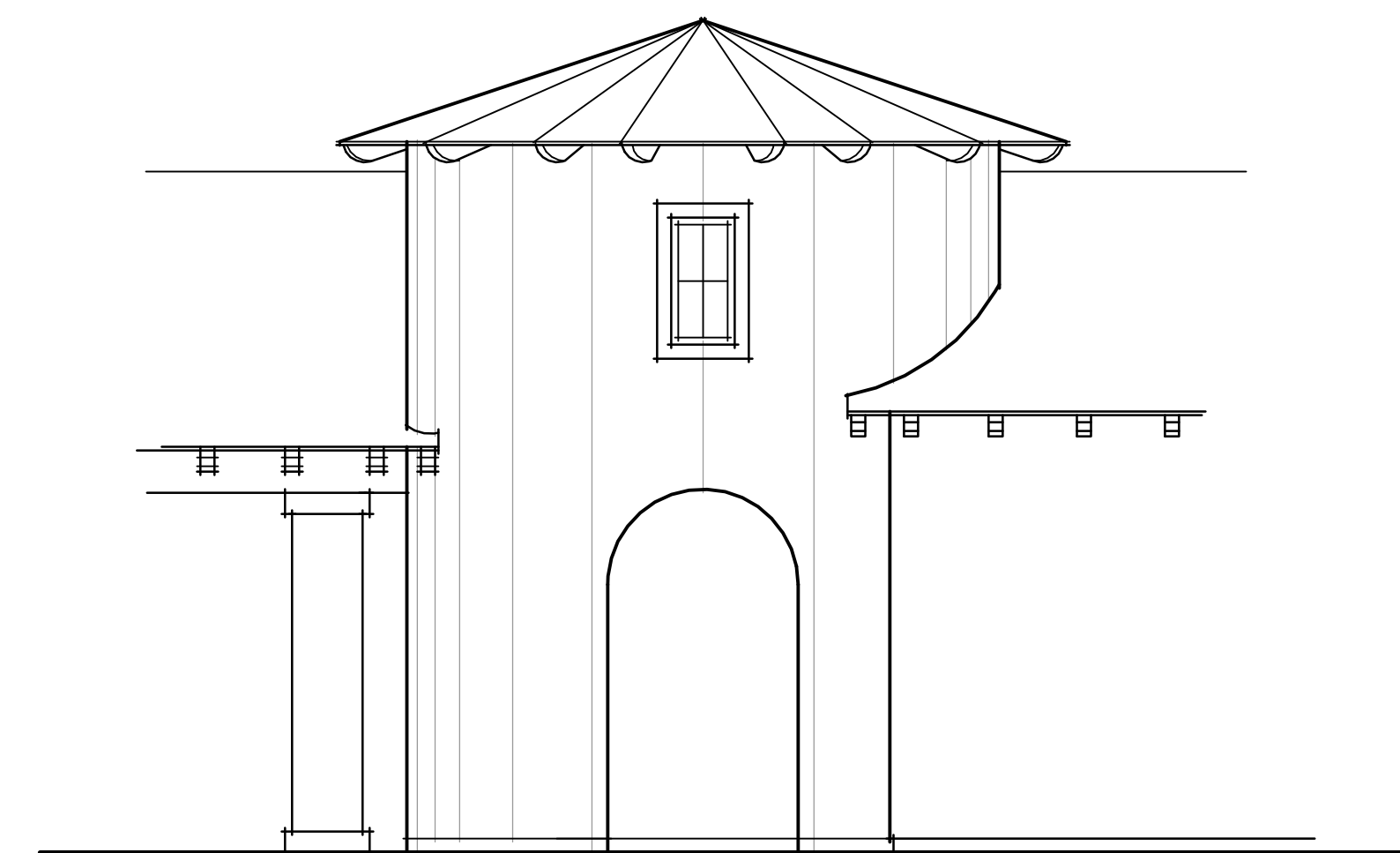


COURTYARD ELEVATION '2B'

REFER TO BASIC PLAN FOR NOTES, CONDITIONS, AND DIMENSIONS NOT SHOWN



SCALE: 1/4" = 1'-0"



COURTYARD ELEVATION '2A'

REFER TO BASIC PLAN FOR NOTES, CONDITIONS, AND DIMENSIONS NOT SHOWN