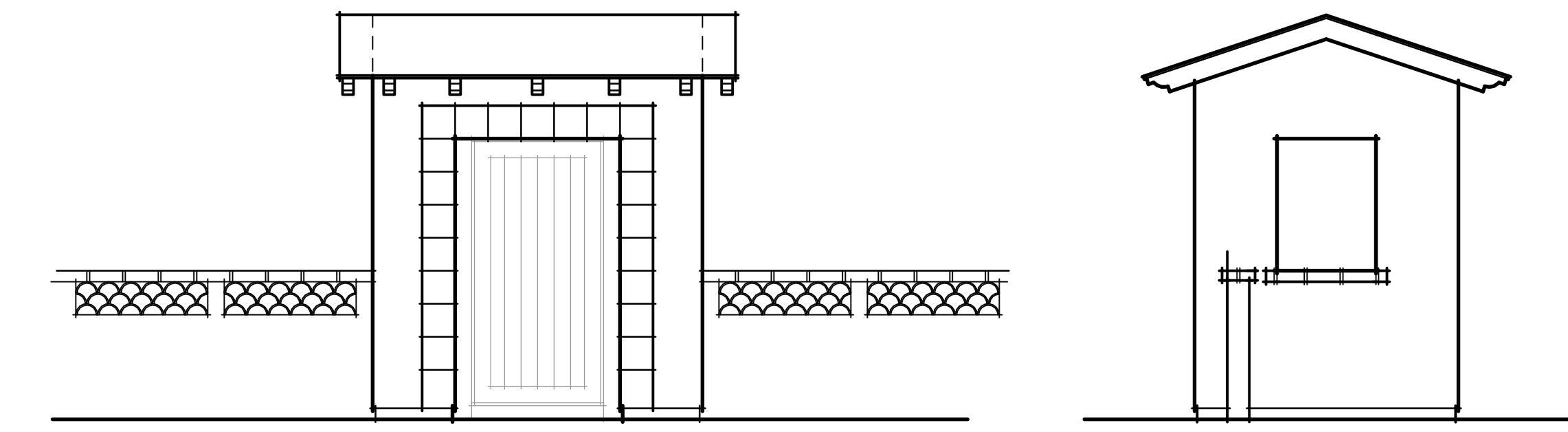


ENTRY COURTYARD ELEVATION 'B'



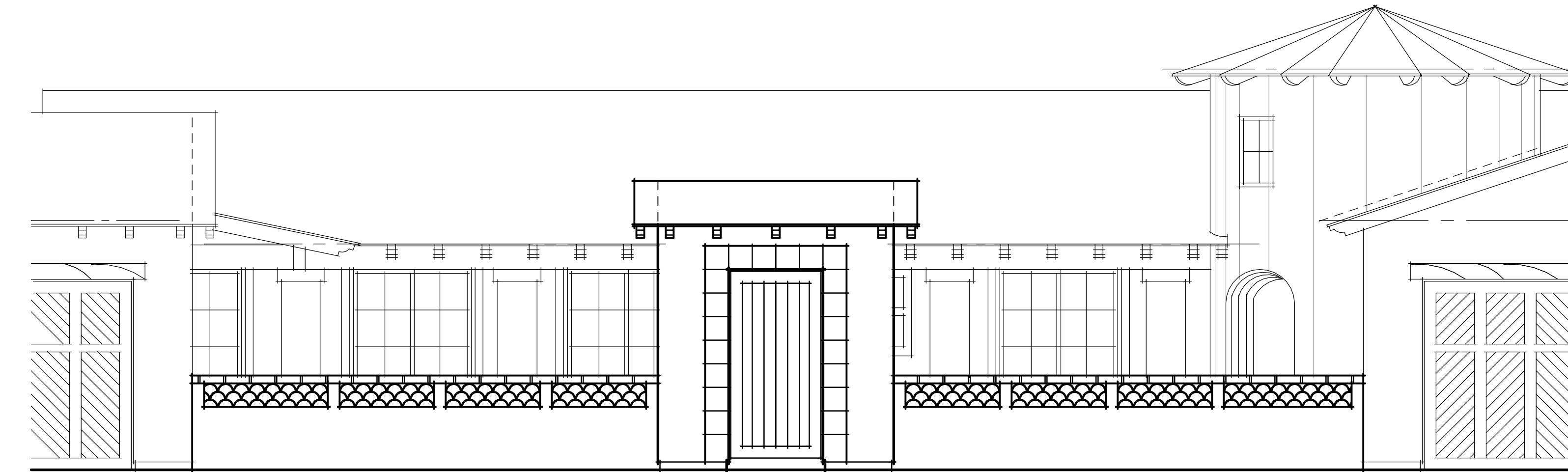
ENTRY COURTYARD ELEVATION 'A'



ENTRY COURTYARD ELEVATION 'B'

SCALE: 1/4" = 1'-0"

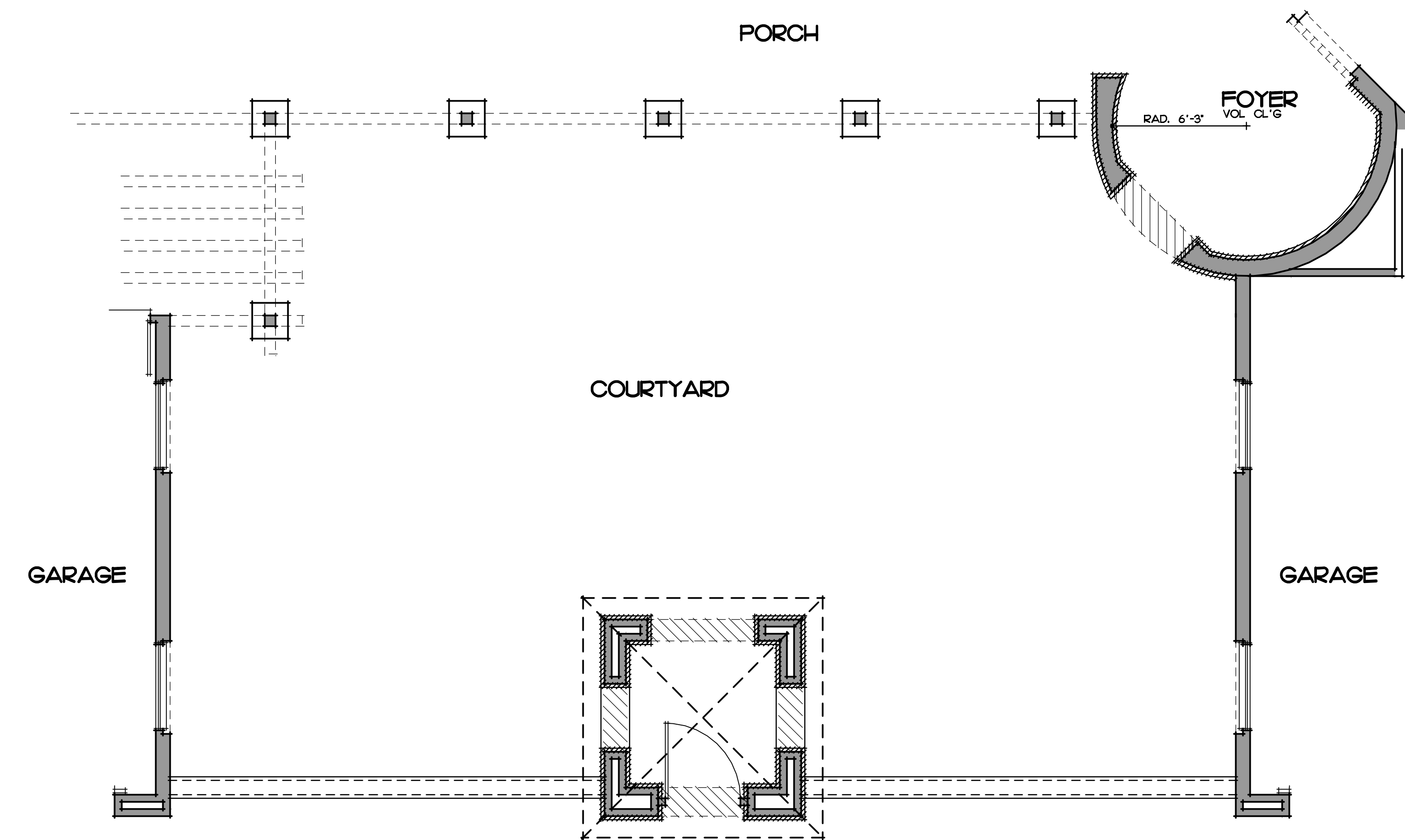
REFER TO BASIC PLAN FOR NOTES, CONDITIONS, AND DIMENSIONS NOT SHOWN



ENTRY COURTYARD ELEVATION 'A'

SCALE: 1/4" = 1'-0"

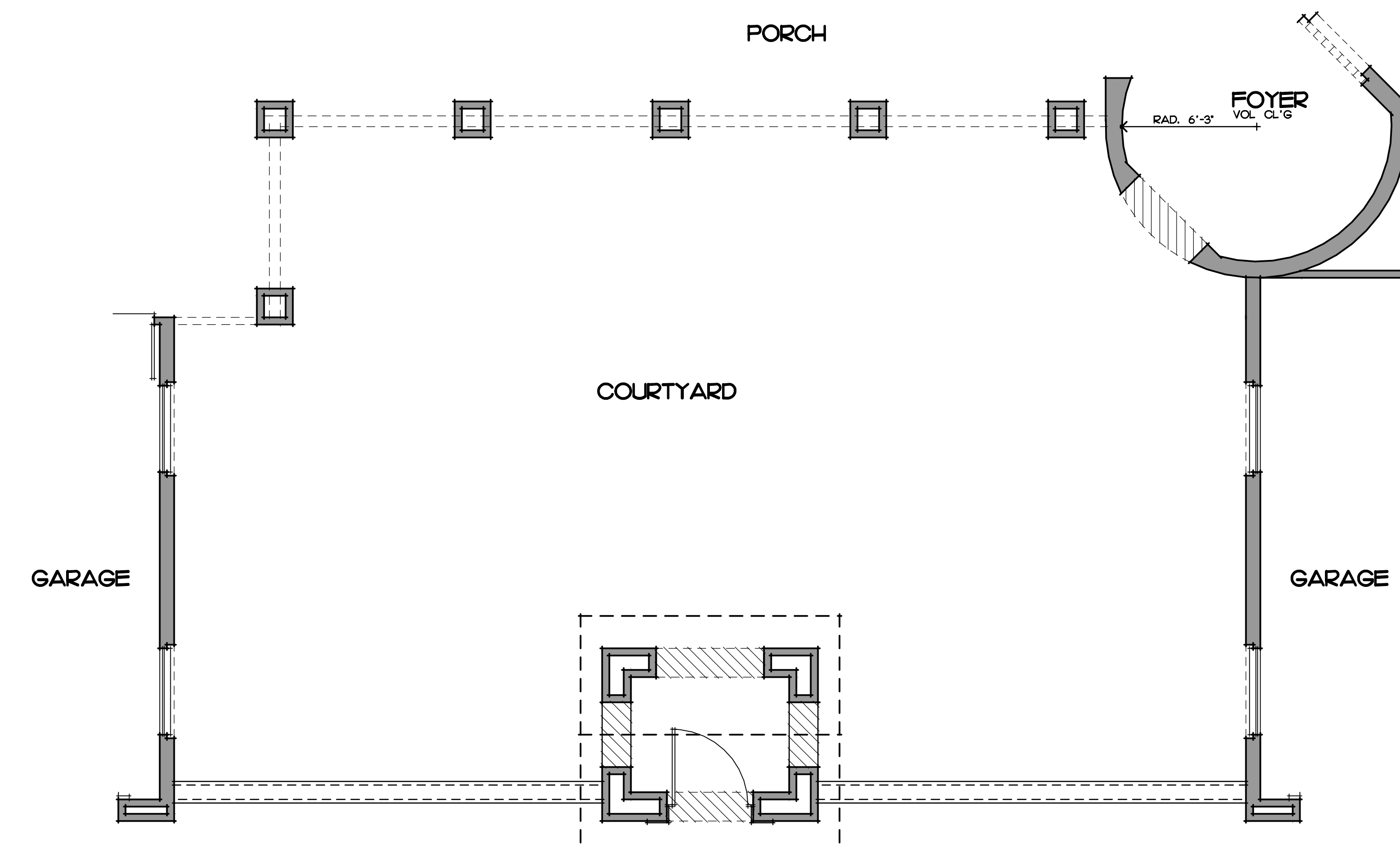
REFER TO BASIC PLAN FOR NOTES, CONDITIONS, AND DIMENSIONS NOT SHOWN



ENTRY COURTYARD PLAN 'B'

SCALE: 1/4" = 1'-0"

REFER TO BASIC PLAN FOR NOTES, CONDITIONS, AND DIMENSIONS NOT SHOWN



ENTRY COURTYARD PLAN 'A'

SCALE: 1/4" = 1'-0"

REFER TO BASIC PLAN FOR NOTES, CONDITIONS, AND DIMENSIONS NOT SHOWN